



Manhole Inspection Form

M2-16-24



| | | | |
|------------------------|----------------------|-------------------------|------------------------|
| Manhole Number | M2-16-24 | Historic Manhole Number | Sugarbush 22 |
| Year Installed | 1977 | Structure Type | Sanitary Manhole |
| Street | Sugarbush -Remington | Address | 29698 |
| Elevation | 592.252 | Weather | Snowing |
| Temperature | 30° | Ground Condition | Dry |
| Status | At Surface Grade | Location | Paved Asphalt |
| Pavment Condition | Fair | Traffic | Two to Three Lane Road |
| Inspector 1 | Brs | Inspector 2 | Kmd |
| Cover Type | Ej1040a | Number of Cover Holes | Solid Cover |
| Catch Basin Cover | <null> | Cover Insert | No |
| Cover Gasket | No | Cover Grade | Cover is At Grade |
| Grade Dist | 0 | Cover Fit | Good Fit |
| Cover Condition | Cracked | Frame Condition | Fair |
| Frame Offset | <null> | Frame Seal Condition | Good |
| Frame Seal Inflow | None | Frame Riser | Yes |
| Frame Riser Height | 2 | Frame Riser Material | N/A |
| Manhole Diameter | 48 | Manhole Depth | 19.65 |
| Chimney Depth | 1.3 | Chimney Construction | Block |
| Chimney Condition | Good | Chimney Inflow | None |
| Cone Shape | Eccentric | Cone Depth | 20 |
| Cone Construction | Precast | Cone Condition | Fair |
| Cone Inflow | None | Cone Defect Location | <null> |
| Wall Construction | Precast | Wall Condition | Good |
| Wall Inflow | None | Wall Defect Location | <null> |
| Wall Defect Location 2 | <null> | Wall Defect Location 3 | <null> |
| Wall Defect Location 4 | <null> | Wall Defect Location 5 | <null> |
| Bench Construction | Poured | Bench Condition | Fair |
| Bench Inflow | None | Channel Construction | Precast |
| Channel Condition | Fair | Channel Inflow | None |
| Channel Hydraulics | Good | Channel Exposure | Yes |



Manhole Inspection Form

M2-16-24



| | | | |
|--------------------|--------------|-----------------------|--------|
| Step Construction | Iron | Step Condition | Fair |
| Surcharge Evidence | <null> | | |
| Pipe 1 Flow | Inward Flow | Pipe 1 Diameter | 30 |
| Pipe 1 Direction | NE | Pipe 1 Depth | 19.65 |
| Pipe 1 Material | Concrete | Pipe 1 Seal Condition | Good |
| Pipe 1 Drop | <null> | Pipe 1 Comments | <null> |
| Pipe 2 Flow | Inward Flow | Pipe 2 Diameter | 10 |
| Pipe 2 Direction | SE | Pipe 2 Depth | 19.55 |
| Pipe 2 Material | Truss | Pipe 2 Seal Condition | Fair |
| Pipe 2 Drop | <null> | Pipe 2 Comments | <null> |
| Pipe 3 Flow | Outward Flow | Pipe 3 Diameter | 30 |
| Pipe 3 Direction | SW | Pipe 3 Depth | 19.65 |
| Pipe 3 Material | Concrete | Pipe 3 Seal Condition | Good |
| Pipe 3 Drop | <null> | Pipe 3 Comments | <null> |
| Pipe 4 Flow | <null> | Pipe 4 Diameter | <null> |
| Pipe 4 Direction | <null> | Pipe 4 Depth | <null> |
| Pipe 4 Material | <null> | Pipe 4 Seal Condition | <null> |
| Pipe 4 Drop | <null> | Pipe 4 Comments | <null> |
| Pipe 5 Flow | <null> | Pipe 5 Diameter | <null> |
| Pipe 5 Direction | <null> | Pipe 5 Depth | <null> |
| Pipe 5 Material | <null> | Pipe 5 Seal Condition | <null> |
| Pipe 5 Drop | <null> | Pipe 5 Comments | <null> |
| Pipe 6 Flow | <null> | Pipe 6 Diameter | <null> |
| Pipe 6 Direction | <null> | Pipe 6 Depth | <null> |
| Pipe 6 Material | <null> | Pipe 6 Seal Condition | <null> |
| Pipe 6 Drop | <null> | Pipe 6 Comments | <null> |
| Recommendation 1 | <null> | Recommendation 2 | <null> |
| Recommendation 3 | <null> | Recommendation 4 | <null> |
| Recommendation 5 | <null> | Recommendation 6 | <null> |



Manhole Inspection Form

M2-16-24



| | | | |
|------------------|--------------------------------------------|------------------|--------------------------------------------------|
| Recommendation 7 | <null> | Recommendation 8 | <null> |
| Manhole Rating | 2 – Failure unlikely in 20 years (Good) | Comments | Middle of road, double cone 48"top 60" bottom |



Manhole Inspection Form

M2-16-24





Manhole Inspection Form

M2-16-24

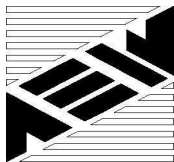




Manhole Inspection Form

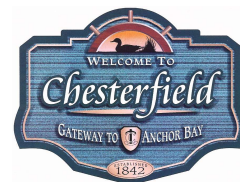
M2-16-24





Manhole Inspection Form

M2-16-24



1101 Schooler Road, Shelby Township, Michigan 48315
Civil Engineers • Surveyors • Architects 586-726-1234

Page: 8

Date: 12/18/16

Address: Sugarbush

R.T. = 19.65'

D = 48 → 60"

Map: 45

Manhole Number: M2-16-24

Community: Chesterfield

Inspector Initials: KMD / BRS

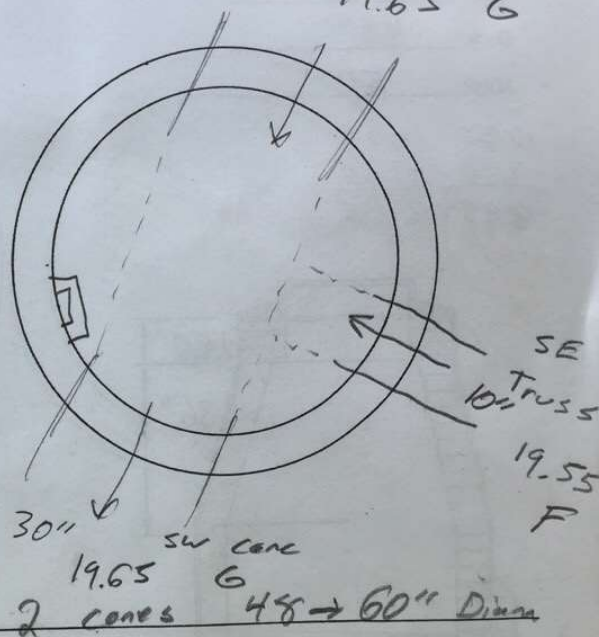
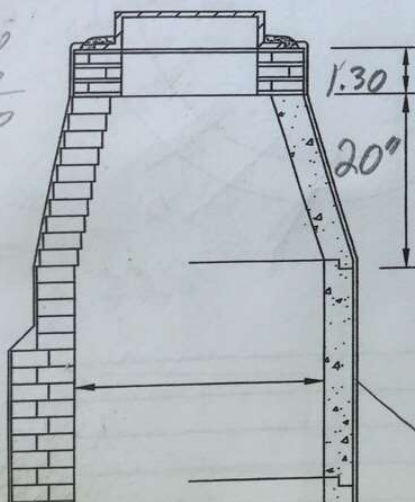


NE conc
30" 19.65 G

$$\begin{array}{r} 20.25 \\ - .60 \\ \hline 19.65 \end{array}$$

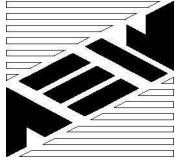
$$\begin{array}{r} 3.25 \\ - .60 \\ \hline 2.65 \end{array}$$

$$\begin{array}{r} 1.50 \\ - .70 \\ \hline .80 \end{array}$$



2 cones 48 → 60" Dia

14/2016 7:06:25 AM



Manhole Inspection Form

M2-16-24

