



Manhole Inspection Form

M1-5-3-3-17-3-3



Manhole Number	M1-5-3-3-17-3-3	Historic Manhole Number	Noble 3
Year Installed	1995	Structure Type	Sanitary Manhole
Street	Noble	Address	25328
Elevation	592.912	Weather	Sunny
Temperature	20°	Ground Condition	Frozen
Status	At Surface Grade	Location	Yard Front
Pavment Condition	N/A	Traffic	Two Lane Road
Inspector 1	Kmd	Inspector 2	Brs
Cover Type	Ej1040apt	Number of Cover Holes	Solid Cover
Catch Basin Cover	<null>	Cover Insert	No
Cover Gasket	Yes	Cover Grade	Cover is Below Grade
Grade Dist	-0.4	Cover Fit	Good Fit
Cover Condition	Good	Frame Condition	Good
Frame Offset	<null>	Frame Seal Condition	Good
Frame Seal Inflow	Low	Frame Riser	No
Frame Riser Height	<null>	Frame Riser Material	N/A
Manhole Diameter	48	Manhole Depth	12.55
Chimney Depth	0.4	Chimney Construction	Brick
Chimney Condition	Good	Chimney Inflow	None
Cone Shape	Eccentric	Cone Depth	36
Cone Construction	Precast	Cone Condition	Good
Cone Inflow	None	Cone Defect Location	None
Wall Construction	Precast	Wall Condition	Good
Wall Inflow	None	Wall Defect Location	None
Wall Defect Location 2	<null>	Wall Defect Location 3	<null>
Wall Defect Location 4	<null>	Wall Defect Location 5	<null>
Bench Construction	Poured	Bench Condition	Good
Bench Inflow	None	Channel Construction	Poured
Channel Condition	Good	Channel Inflow	None
Channel Hydraulics	Good	Channel Exposure	Yes



Manhole Inspection Form

M1-5-3-3-17-3-3



Step Construction	Plastic	Step Condition	Good
Surcharge Evidence	<null>		
Pipe 1 Flow	Inward Flow	Pipe 1 Diameter	12
Pipe 1 Direction	W	Pipe 1 Depth	12.45
Pipe 1 Material	Truss	Pipe 1 Seal Condition	Good
Pipe 1 Drop	<null>	Pipe 1 Comments	<null>
Pipe 2 Flow	Outward Flow	Pipe 2 Diameter	12
Pipe 2 Direction	E	Pipe 2 Depth	12.55
Pipe 2 Material	Truss	Pipe 2 Seal Condition	Good
Pipe 2 Drop	<null>	Pipe 2 Comments	<null>
Pipe 3 Flow	<null>	Pipe 3 Diameter	<null>
Pipe 3 Direction	<null>	Pipe 3 Depth	<null>
Pipe 3 Material	<null>	Pipe 3 Seal Condition	<null>
Pipe 3 Drop	<null>	Pipe 3 Comments	<null>
Pipe 4 Flow	<null>	Pipe 4 Diameter	<null>
Pipe 4 Direction	<null>	Pipe 4 Depth	<null>
Pipe 4 Material	<null>	Pipe 4 Seal Condition	<null>
Pipe 4 Drop	<null>	Pipe 4 Comments	<null>
Pipe 5 Flow	<null>	Pipe 5 Diameter	<null>
Pipe 5 Direction	<null>	Pipe 5 Depth	<null>
Pipe 5 Material	<null>	Pipe 5 Seal Condition	<null>
Pipe 5 Drop	<null>	Pipe 5 Comments	<null>
Pipe 6 Flow	<null>	Pipe 6 Diameter	<null>
Pipe 6 Direction	<null>	Pipe 6 Depth	<null>
Pipe 6 Material	<null>	Pipe 6 Seal Condition	<null>
Pipe 6 Drop	<null>	Pipe 6 Comments	<null>
Recommendation 1	<null>	Recommendation 2	<null>
Recommendation 3	<null>	Recommendation 4	<null>
Recommendation 5	<null>	Recommendation 6	<null>



Manhole Inspection Form

M1-5-3-3-17-3-3



Recommendation 7	<null>	Recommendation 8	<null>
Manhole Rating	2 – Failure unlikely in 20 years (Good)	Comments	Gasket missing



Manhole Inspection Form

M1-5-3-3-17-3-3





Manhole Inspection Form

M1-5-3-3-17-3-3



31301 Schenckler Road, Sibley Township, Michigan 48315
Civil Engineers • Surveyors • Architects 586-726-1234 Page: 5

Date: 12-15-16
Address: 25928 Noble
R.T. = 12.55
D = 48
Map: 57

Manhole Number: M1-5-3-3-17-3-3
Community: Chesterfield
Inspector Initials: BRS / KMD

Diagram:
A cross-section diagram of a manhole on the left shows a brick structure with a top diameter of 36" and a height of 40". A plan view on the right shows a circular manhole with a diameter of 48" and a depth of 12.55'. The plan view is labeled with 'W-(G) 12" TRANS 12.45' and 'E-(G) 12" TRANS 12.55'. A north arrow is located between the two diagrams.

Photograph This Document!

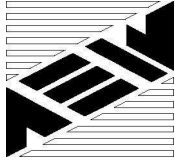
Fax 586-726-8780 Engineering Strong Communities www.aewinc.com



Manhole Inspection Form

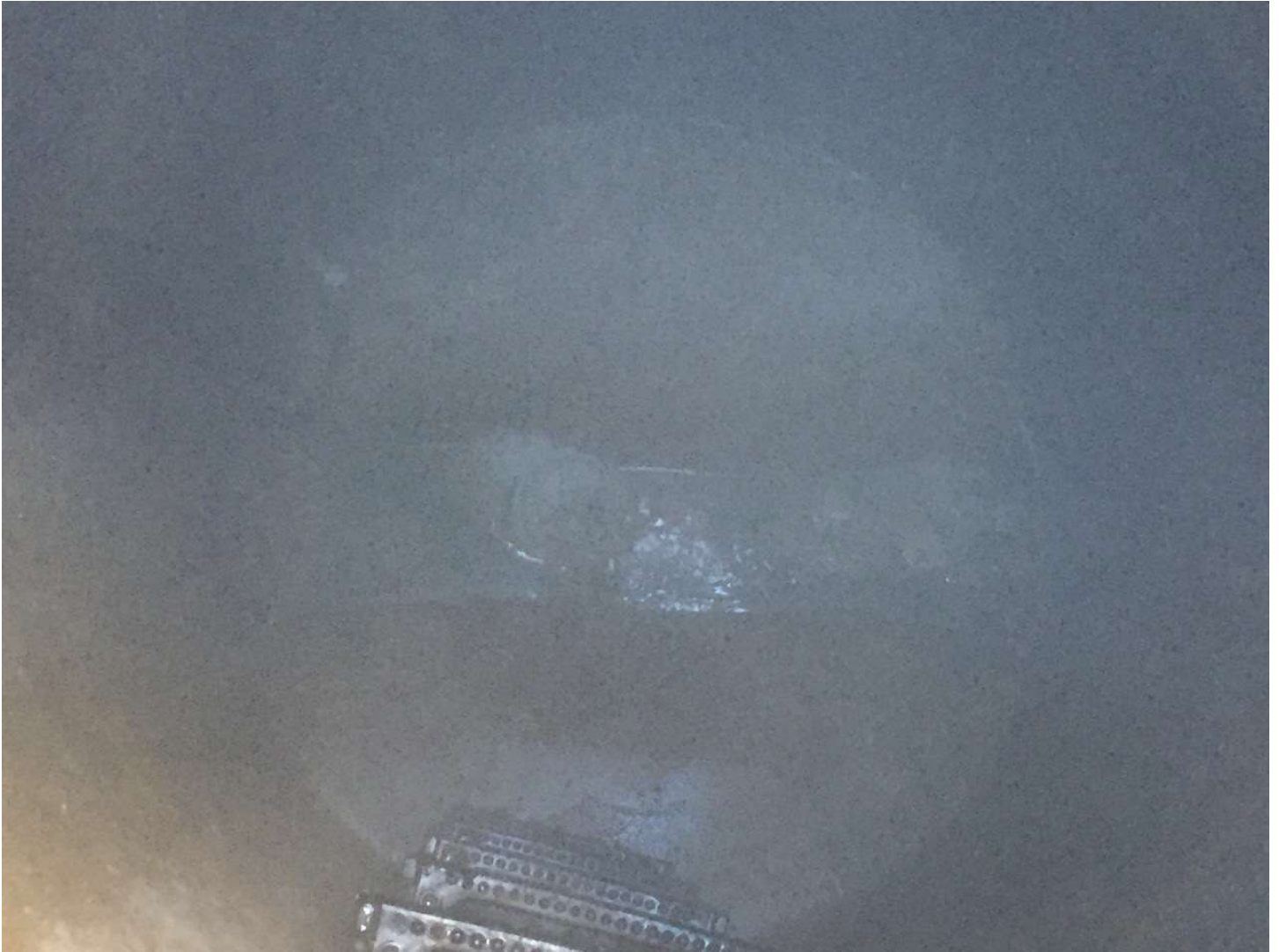
M1-5-3-3-17-3-3

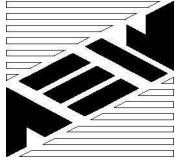




Manhole Inspection Form

M1-5-3-3-17-3-3





Manhole Inspection Form

M1-5-3-3-17-3-3





Manhole Inspection Form

M1-5-3-3-17-3-3

